





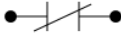
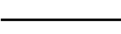
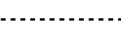






Smartrise Engineering Index

200610-003, NAV CANADA CAR 1, 07-08-2020

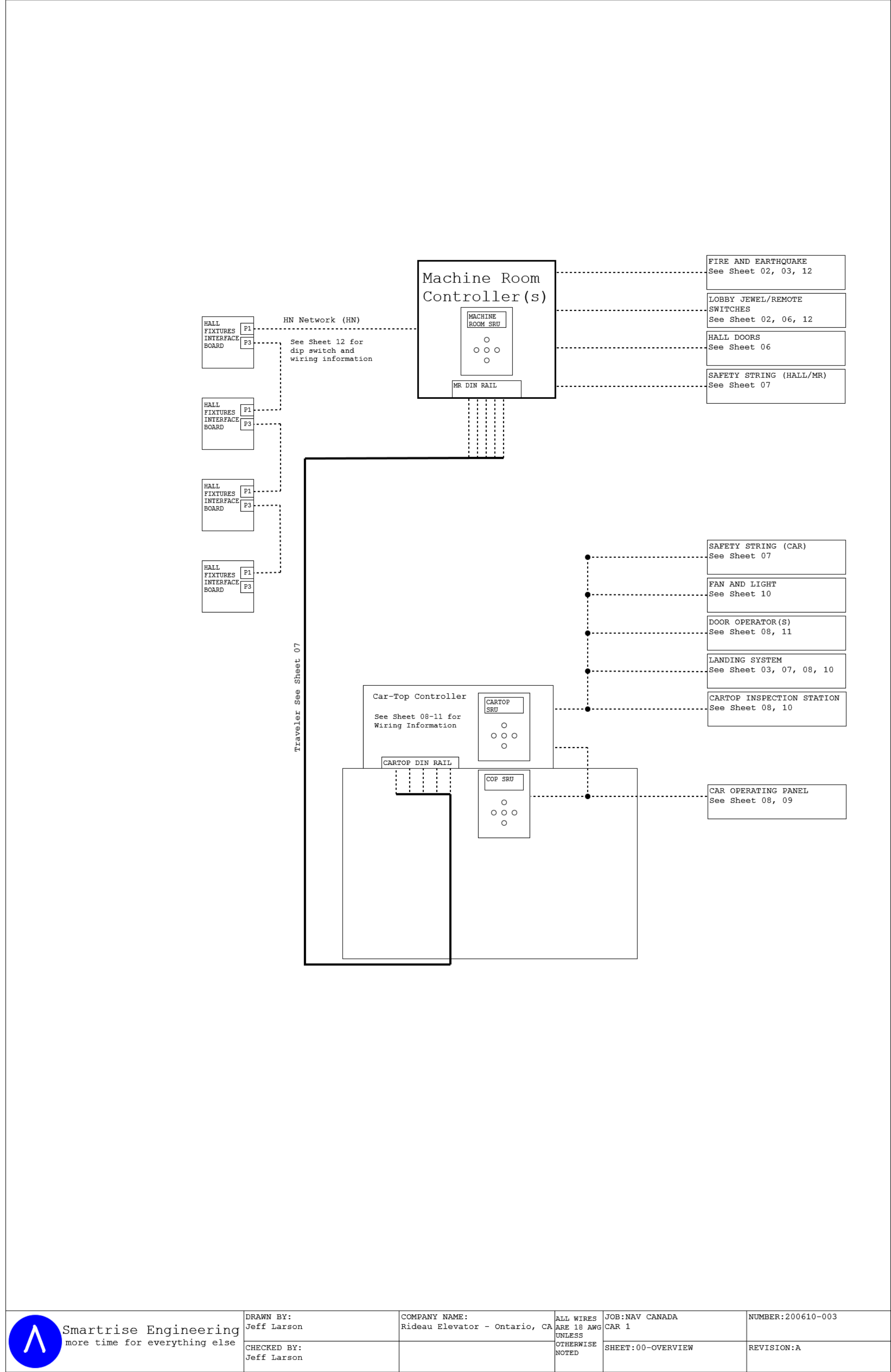
Device Lookup		Sheet #	Description
Device:	Location in drawings:	0	Overview Page
Battery Power	[2.15], [3.6]	1	Getting Started/ Construction
Buffer Switch	[7.3]	2	Machine Room I/O and Direct Connections
Cabinet Light	[3.11]	3	Machine Room Power
Car Arrival Lantern	[9.90]	4	Motor and Drive
Car Call Buttons	[9.5]	5	Brakes / Hydro Options
Car Call Lamps	[9.4]	6	Hall and Hoistway Connections
Car Call Security	[9.6]	7	Traveler and Safety String
Car Door Controls	[9.9]	8	CT Board IO and Direct Connections
Car Safeties	[7.4]	9	COP Board IO and Direct Connections
Car Top Inspection	[8.1], [10.4]	10	Car Device Connections
CN Network	[2.2], [7.1], [7.2], [8.5]	11	Door Operator(s)
DC Power Supply	[3.2]	12	Hall Network Addressing and Configuration
Enclosure Cooling	[3.9]	13	Group Connections w/ Hall
Final Limits	[7.3]		
Fire Service (COP)	[9.7]		
Fire Smoke Detectors	[2.7]		
Front Door Operator	[8.3], [11.1]		
Hall Network (Car)	[2.2], [13.91], [12.1]		
Hoistway/Access Inspection	[9.10], [2.1], [6.5]		
Hydro Contacts	[2.11]		
In Car Inspection	[9.10], [9.80]		
In Car Stop	[9.10]		
Interlocks	[6.2], [6.1], [2.1]		
Landing System	[8.2], [10.5]		
Light/Fan Circuit	[10.3]		
Machine Room Inspection	[2.4]		
Main Line Connections	[3.3]		
Pit Switch	[7.3]		
Position Indicator (Car)	[10.1]		
Position Indicator (Hall)	[6.4]		
Safety Relays	[2.3], [7.6]		
Safety String	[7.4], [7.2], [7.1], [7.3], [7.5],		
Soft Starter and Motor	[2.9], [4.1]		
Telephone	[3.3], [7.1], [7.2], [10.2]		
Transformer	[3.1]		
Valves	[2.9], [4.2]		

Symbol:	Description:
	Coil
	Lamp
	Audible Device: (e.g. Buzzer/Chime)
	Toggle Switch
	Normally Open Push Button
	Contact: Normally Open (N.O.)
	Contact: Normally Closed (N.C.)
	Factory Connected Wire
	Field Connected Wire
	Terminal Block
	Recommended Terminal Block
	Off Page Connection
	Hoistway Bundle Connection (wire 14 shown)
MR [5xx] or [6xx]	Machine Room Board (MR Board)
CT [5xx] or [6xx]	Car Board 1 (Car-Top Board)
COP [5xx] or [6xx]	Car Board 2 (COP Board)
EXP [5xx] or [6xx]	Expansion SRU (EXP)
(device name)	Device Connection (e.g. "drive")
(r.coil) or (r.cont) (c.coil) or (c.cont)	Relay or Contactor Coil or Contact
Building	Building Connection

Notes:	Examples:
Distant connections are reference made to a connection that is shown on another page. The distant connection reference the sheet and section where the connection is made.	<div><div>EQRST</div><div></div><div>3.4</div></div> <p>EQRST is a switch where the connections are continued on Sheet 3, section 4, shown as:</p> <div><div>3.4</div></div>
	<div><div>DCL-R</div><div></div><div>8.3</div></div> <p>DCL-R is a field connection that's continued on sheet 8, section 3, shown as:</p> <div><div>8.3</div></div>
Contactors or Relay coils/contacts that are shown in a different section that the corresponding coil/contacts have a reference to the sheet and section where the coil/contacts are located.	<div><div>The M Contactor has more connections that are shown on sheet 7, section 6, Shown as:</div><div>7.6</div><div><div>M</div><div>CONTACTOR</div><div><div>L3</div><div>T3</div></div><div><div>L2</div><div>T2</div></div><div><div>L1</div><div>T1</div></div><div>7.6</div></div></div>

Traveler Cable Details: Minimum conductor counts (no Spares)	
Traveler, 14 awg	3
Traveler, 18 awg	14
Traveler, Shielded Pairs	2

Hoistway Cable Details: Minimum conductor counts (no Spares)	
Hoistway, 18 awg	17
Hoistway, Cat-5 Package	1



Smartrise Engineering
more time for everything else

DRAWN BY:
Jeff Larson

CHECKED BY:
Jeff Larson

COMPANY NAME:
Rideau Elevator - Ontario, CA

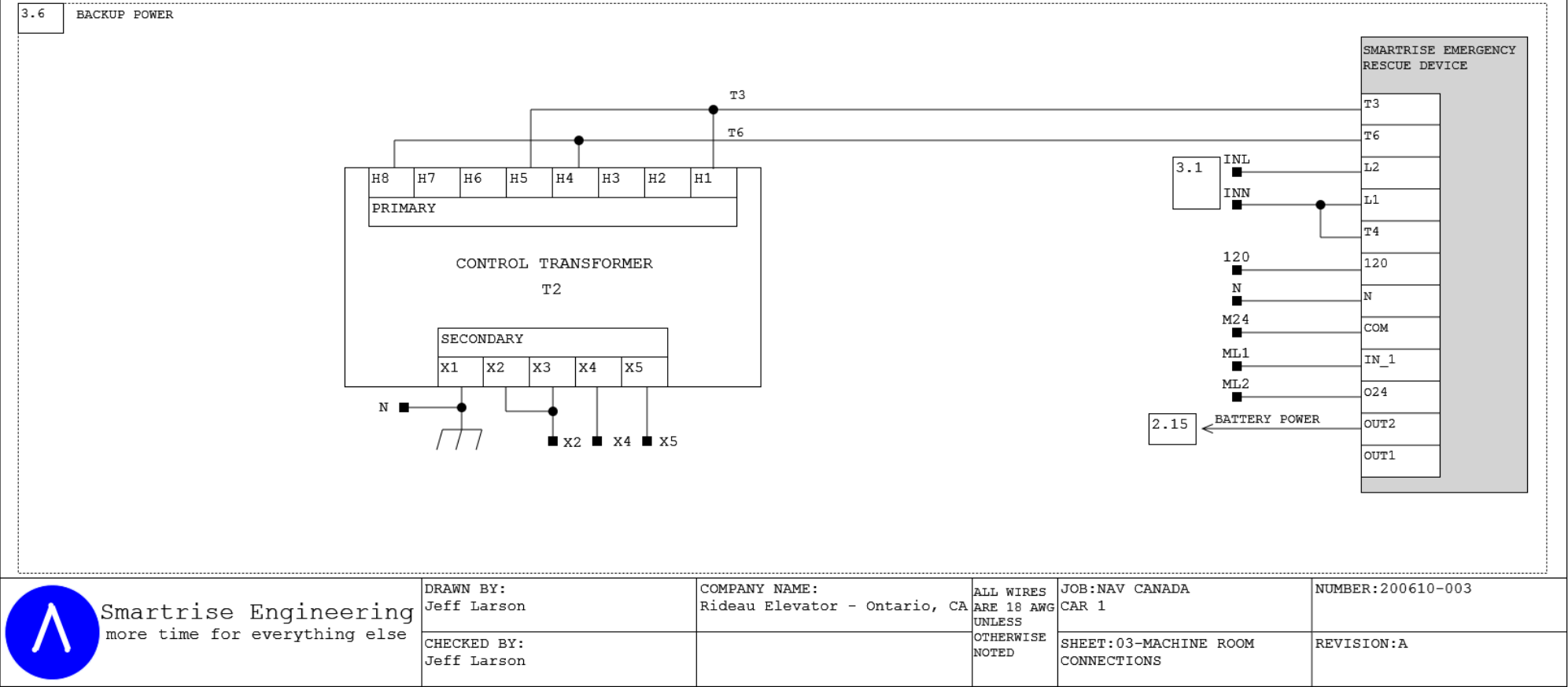
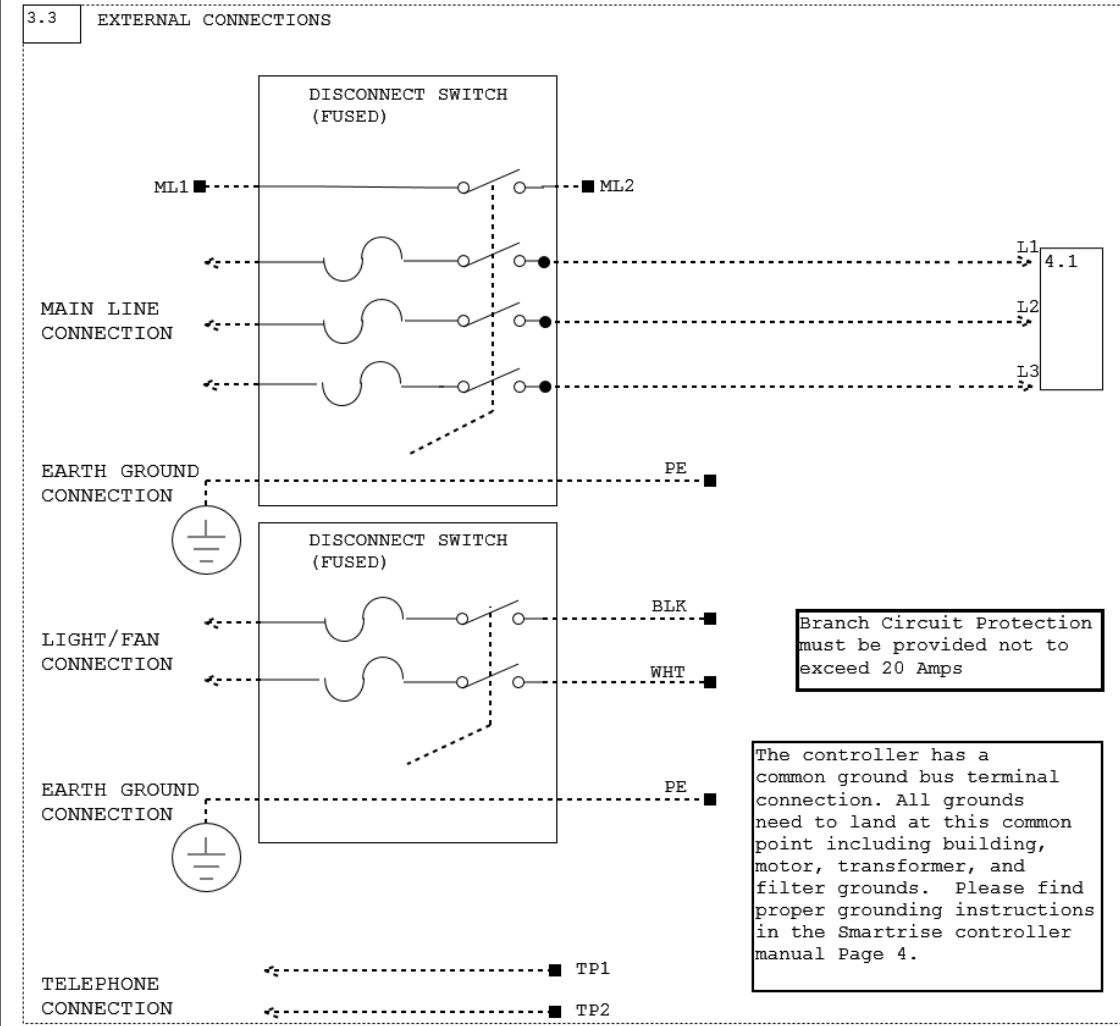
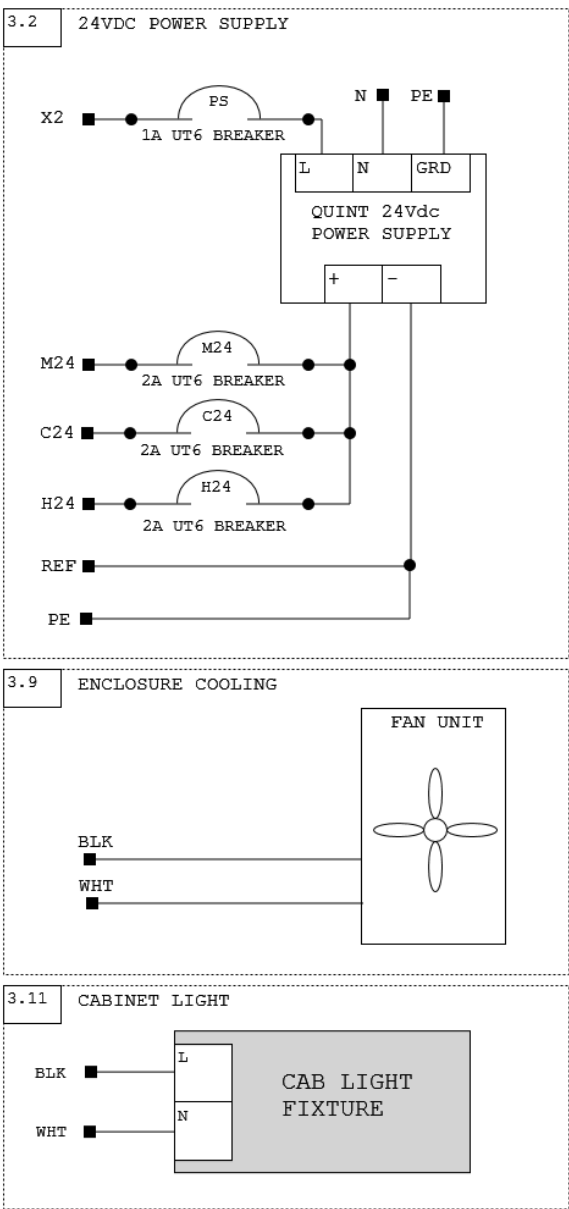
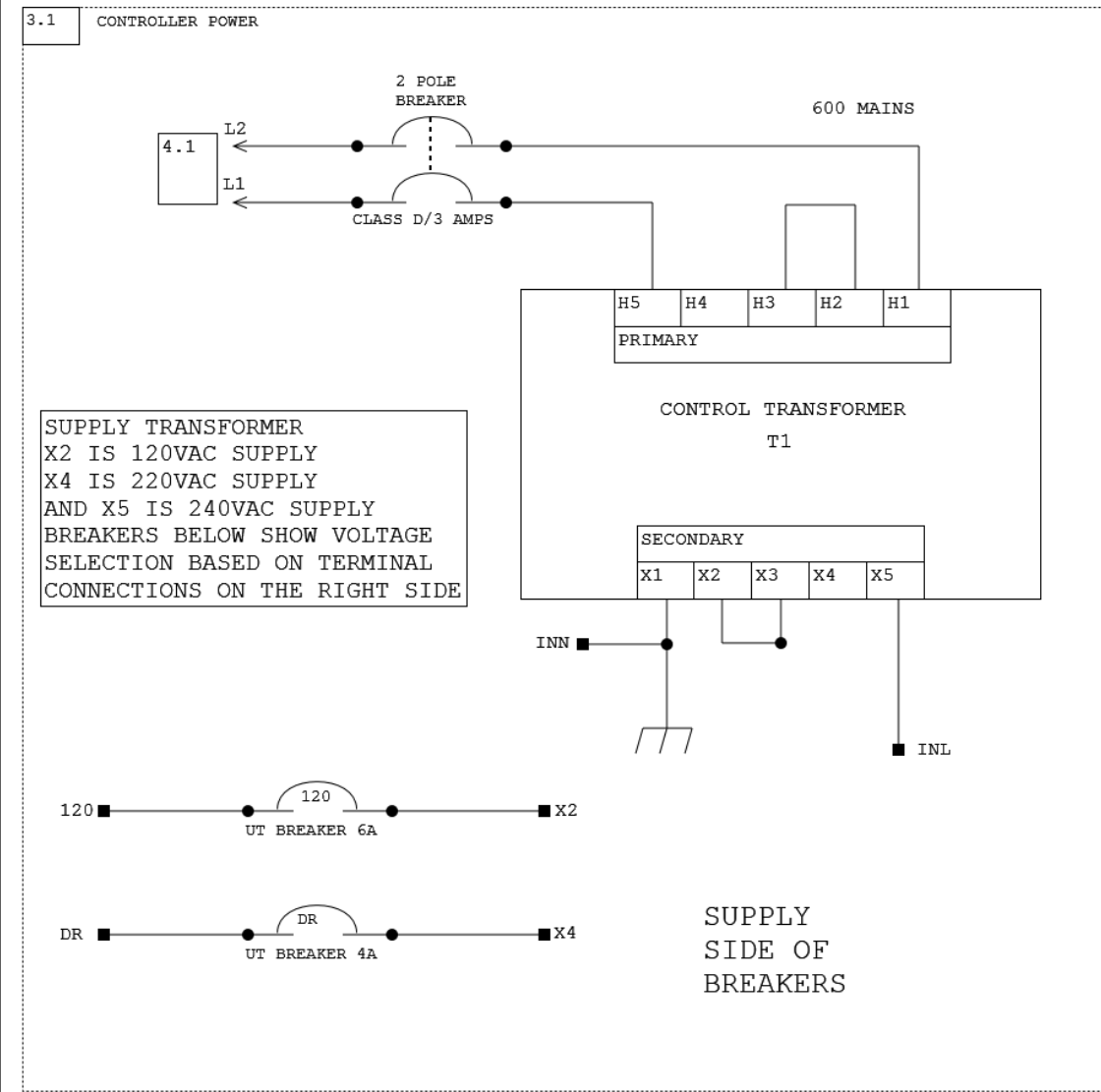
ALL WIRES
ARE 18 AWG
UNLESS
OTHERWISE
NOTED

JOB:NAV CANADA
CAR 1

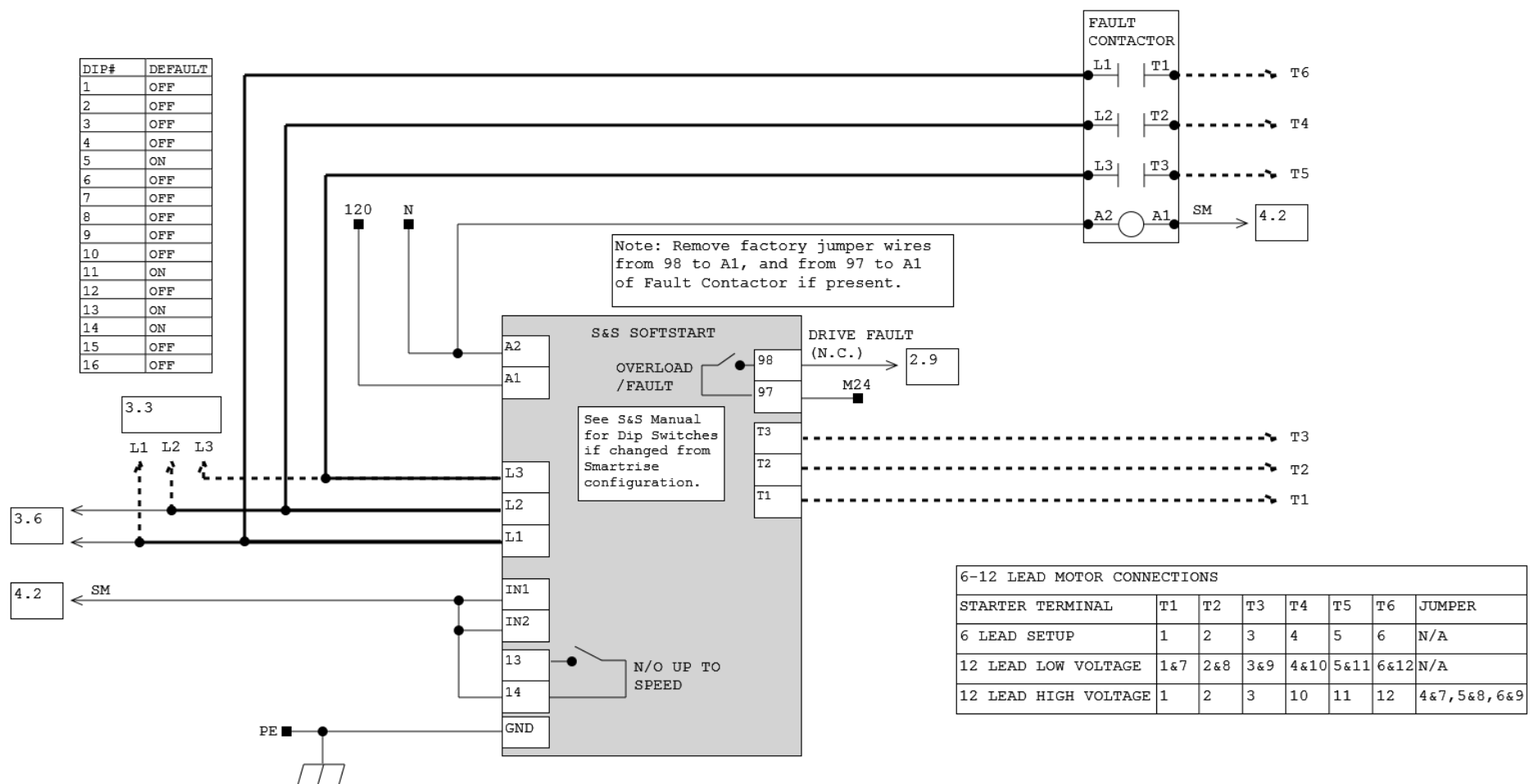
SHEET:00-OVERVIEW

NUMBER:200610-003

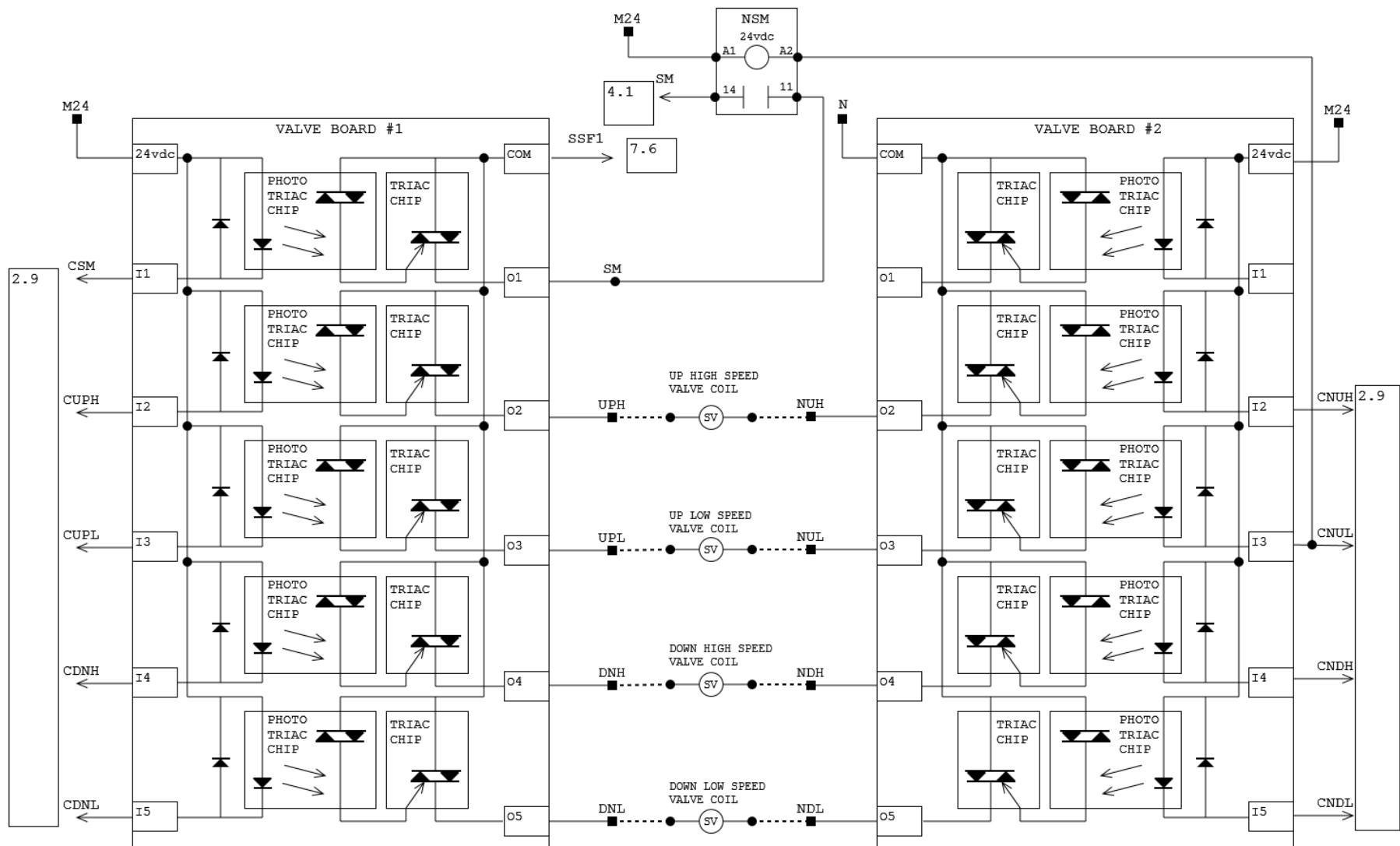
REVISION:A



4.1 DRIVE AND MOTOR



4.2	Valve Relays
-----	--------------



Smartrise Engineering
more time for everything else

DRAWN BY:
Jeff Larson

CHECKED BY:
Jeff Larson

COMPANY NAME:
Rideau Elevator - Ontario, CA

ALL WIRES ARE 18 AWG UNLESS OTHERWISE NOTED

JOB:NAV CANADA
CAR 1

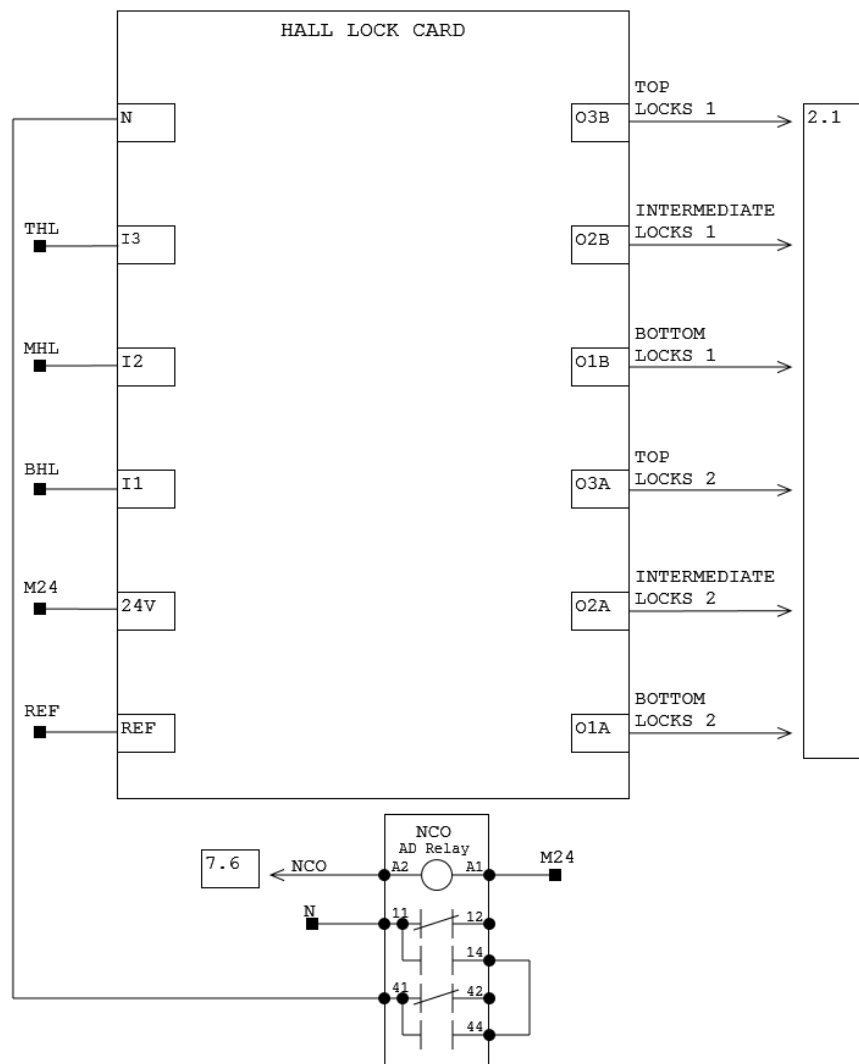
SHEET: 04-MOTOR AND DRIVE CONNECTIONS

NUMBER: 200610-003

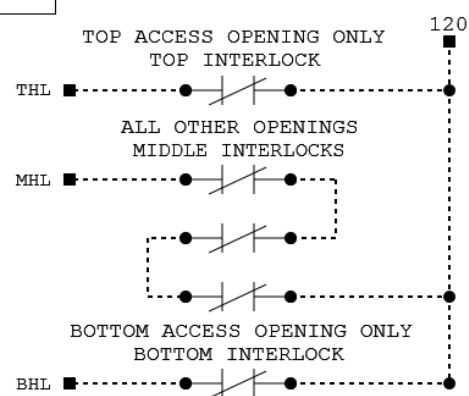
REVISION:A

HYDRO NO OPTIONS

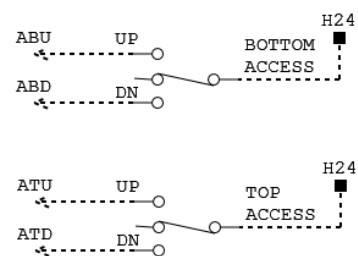
6.1 INTERLOCK RELAYS



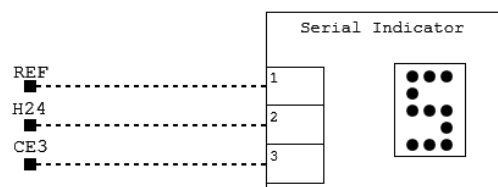
6.2 INTERLOCKS

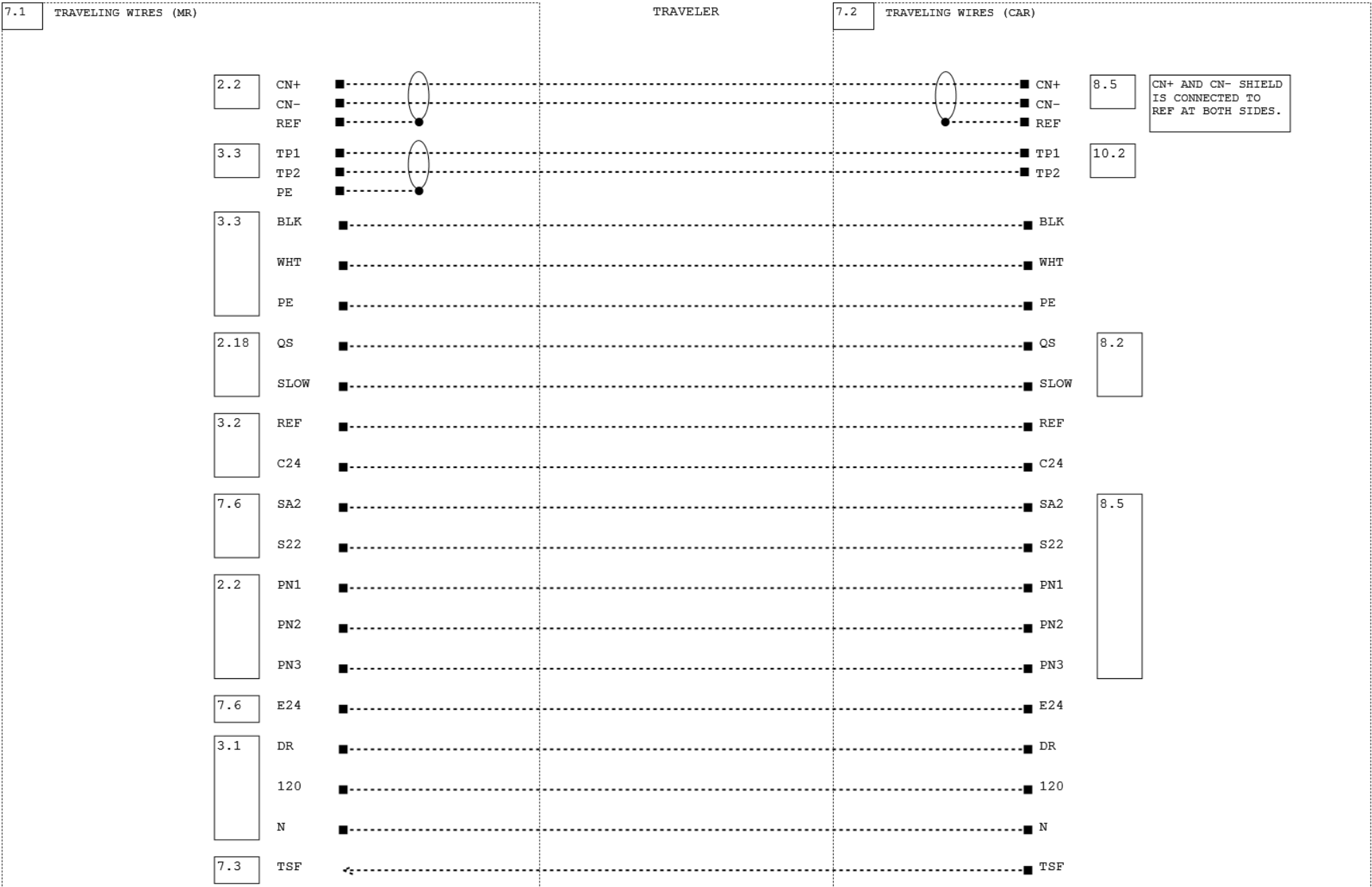


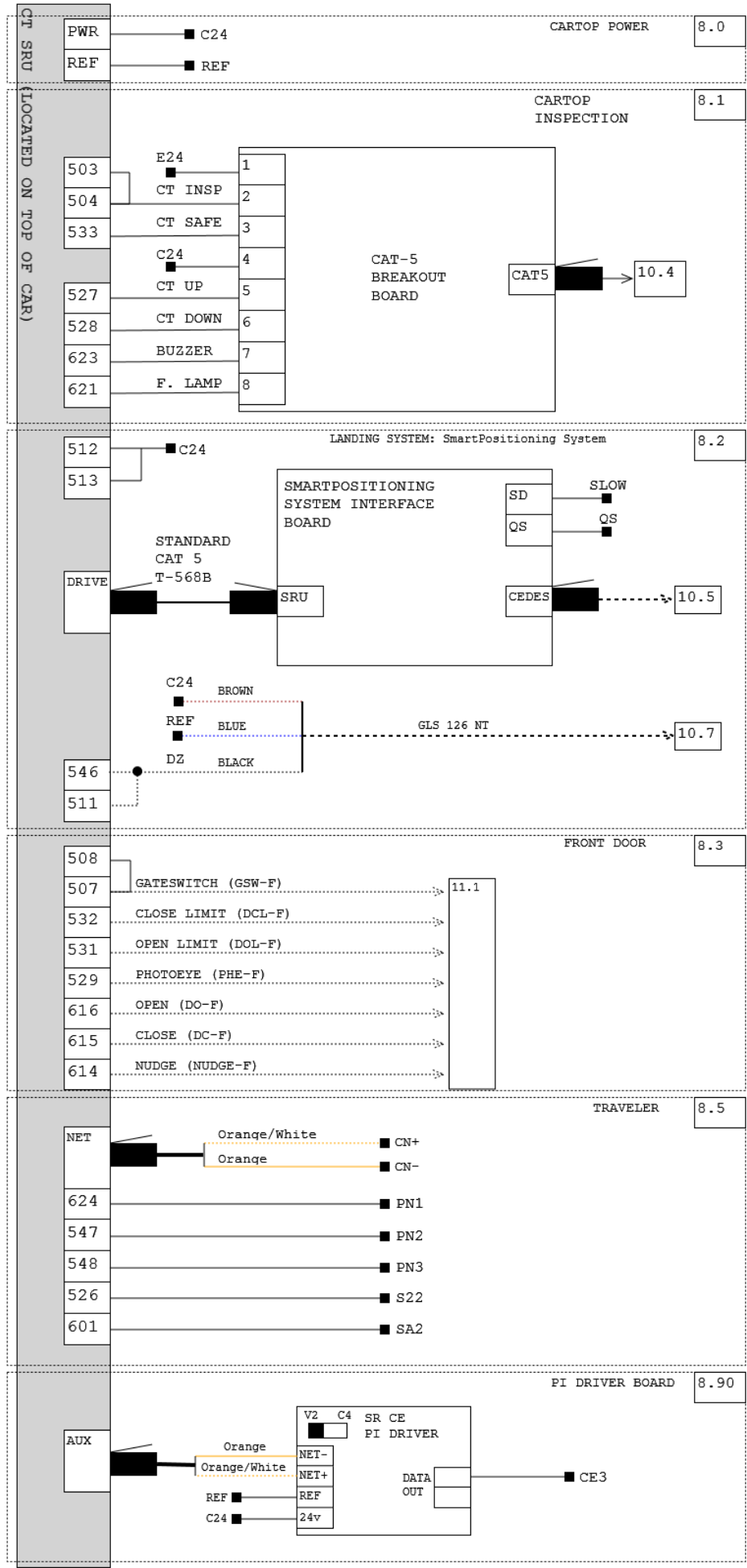
6.5 ACCESS SWITCHES



6.4	SERIAL INDICATORS (I.E. LANTERNS, PI)
-----	---------------------------------------







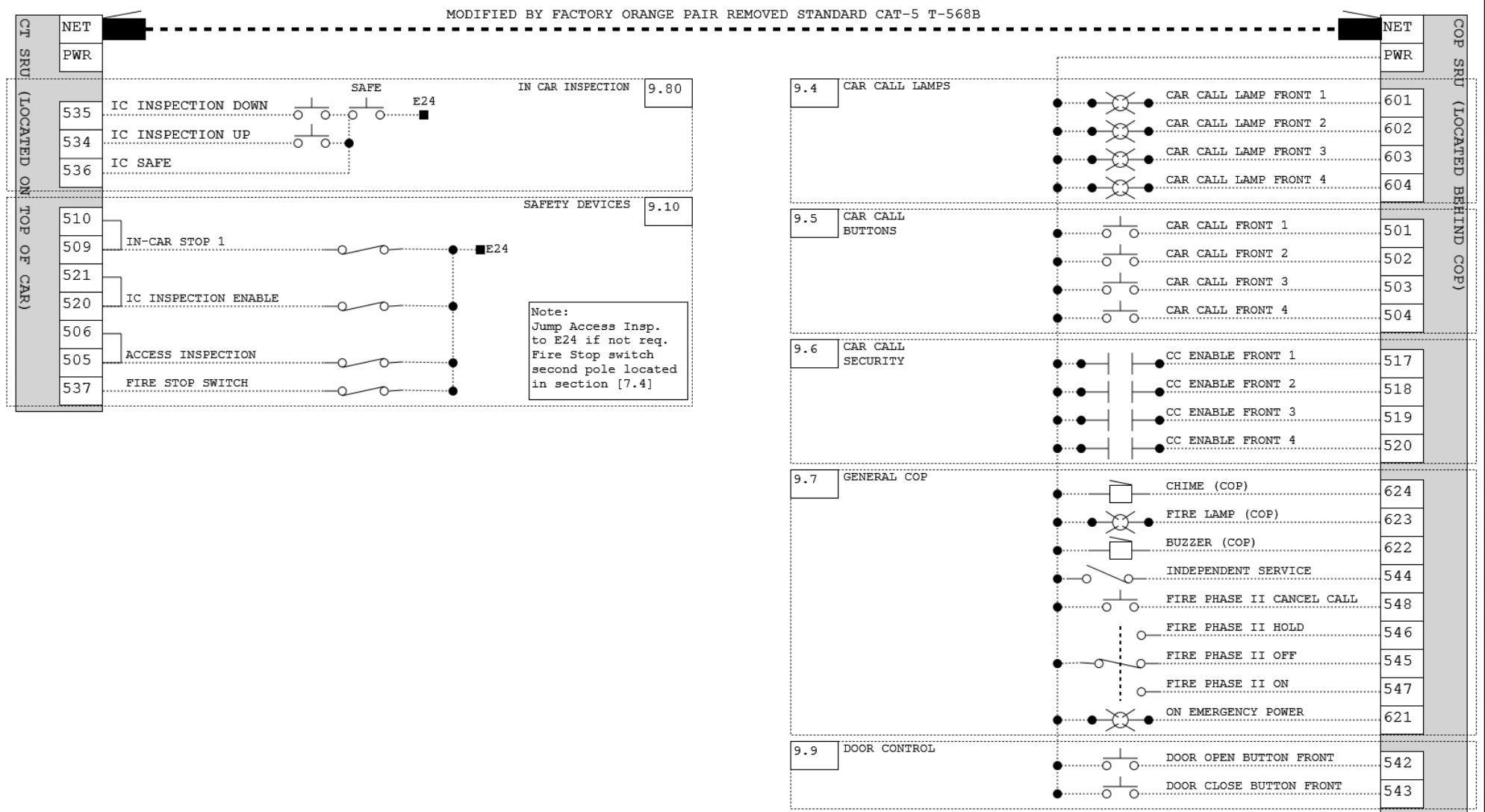
JUMPERS AND DIP SWITCHES
CAR-TOP BOARD

8.99

	DIP A
#	SWITCH USE:
1	CPU STOP SWITCH
2	
3	
4	
5	
6	POP UP BLOCKER
7	
8	

1		
20		
21		
22		
23		
24		
47		
48		
2		
3		

	DIP B
#	SWITCH STATE:
1	OFF
2	OFF
3	OFF
4	ON
5	OFF
6	OFF
7	ON
8	ON



9.4

CAR CALL LAMPS

CAR CALL LAMP FRONT 1

601

CAR CALL LAMP FRONT 2

602

CAR CALL LAMP FRONT 3

603

CAR CALL LAMP FRONT 4

604

9.5

CAR CALL BUTTONS

CAR CALL FRONT 1

501

CAR CALL FRONT 2

502

CAR CALL FRONT 3

503

CAR CALL FRONT 4

504

9.6

CAR CALL SECURITY

CC ENABLE FRONT 1

517

CC ENABLE FRONT 2

518

CC ENABLE FRONT 3

519

CC ENABLE FRONT 4

520

9.7

GENERAL COP

CHIME (COP)

624

FIRE LAMP (COP)

623

BUZZER (COP)

622

INDEPENDENT SERVICE

544

FIRE PHASE II CANCEL CALL

548

FIRE PHASE II HOLD

546

FIRE PHASE II OFF

545

FIRE PHASE II ON

547

ON EMERGENCY POWER

621

9.9

DOOR CONTROL

DOOR OPEN BUTTON FRONT

542

DOOR CLOSE BUTTON FRONT

543

COP SRU
(LOCATED BEHIND COP)

NET

PWR

601

CAR CALL LAMP FRONT 1

602

CAR CALL LAMP FRONT 2

603

CAR CALL LAMP FRONT 3

604

CAR CALL LAMP FRONT 4

501

CAR CALL FRONT 1

502

CAR CALL FRONT 2

503

CAR CALL FRONT 3

504

CAR CALL FRONT 4

517

CC ENABLE FRONT 1

518

CC ENABLE FRONT 2

519

CC ENABLE FRONT 3

520

CC ENABLE FRONT 4

624

CHIME (COP)

623

FIRE LAMP (COP)

622

BUZZER (COP)

544

INDEPENDENT SERVICE

548

FIRE PHASE II CANCEL CALL

546

FIRE PHASE II HOLD

545

FIRE PHASE II OFF

547

FIRE PHASE II ON

621

ON EMERGENCY POWER

542

DOOR OPEN BUTTON FRONT

543

DOOR CLOSE BUTTON FRONT

JUMPERS AND DIP SWITCHES				9.99
COP BOARD				
DIP A			DIP B	
# SWITCH USE:			# SWITCH STATE:	
1			1	OFF
2			2	OFF
3			3	OFF
4			4	ON
5			5	OFF
6	POP UP BLOCKER		6	OFF
7			7	OFF
8			8	ON

1

20

21

22

23

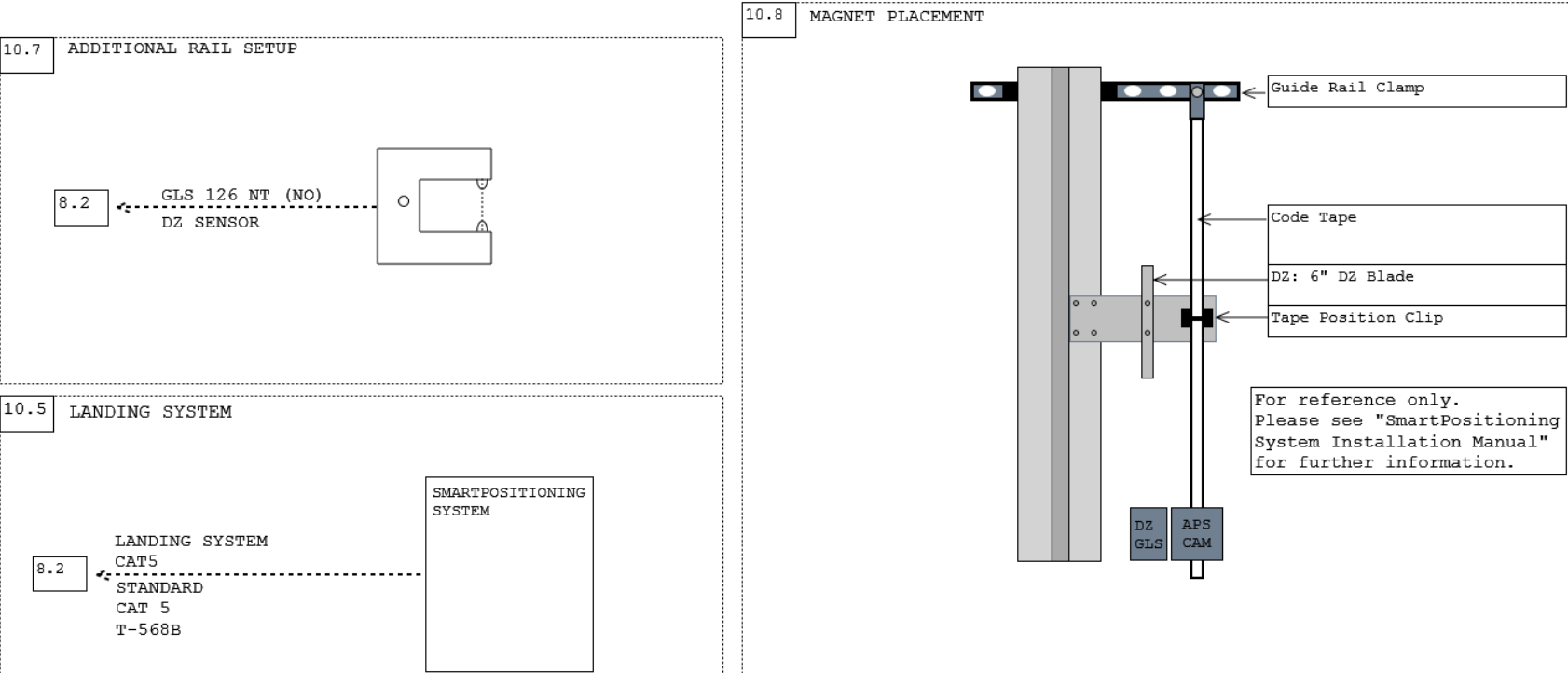
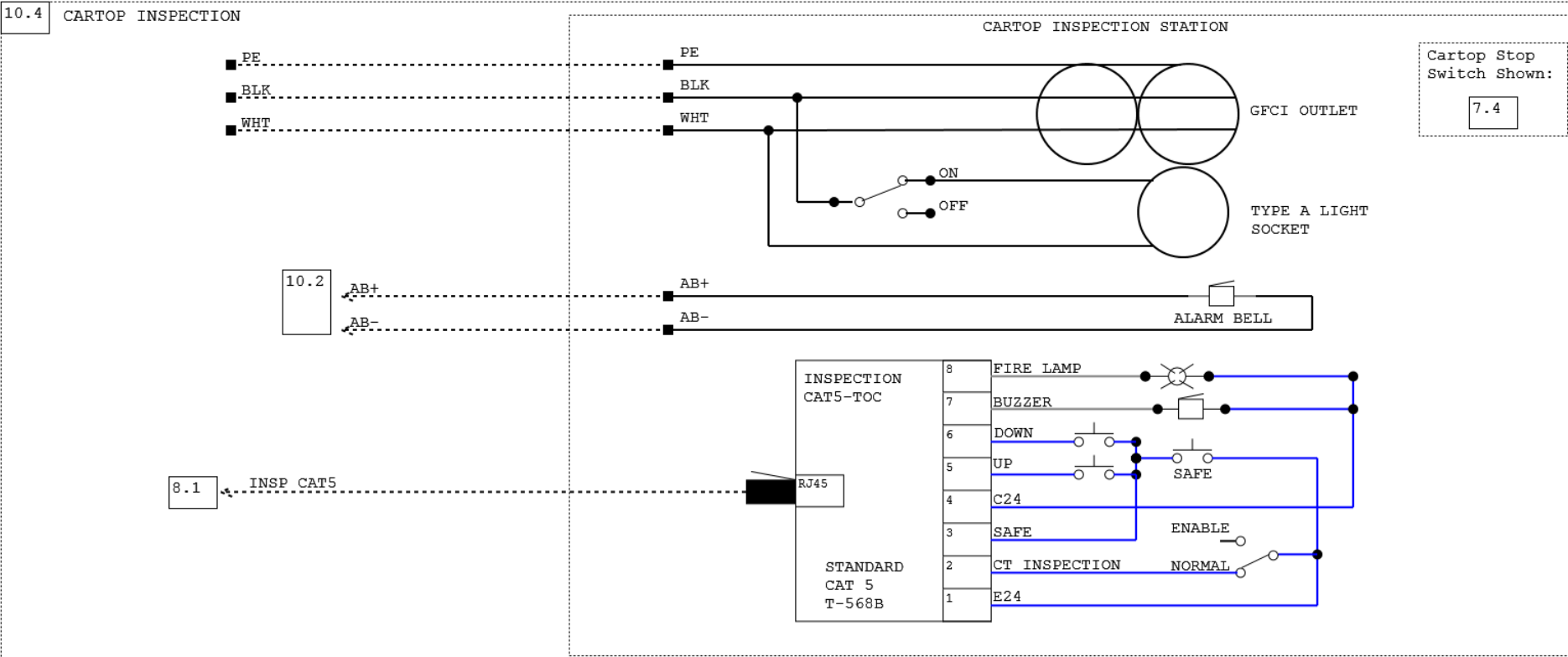
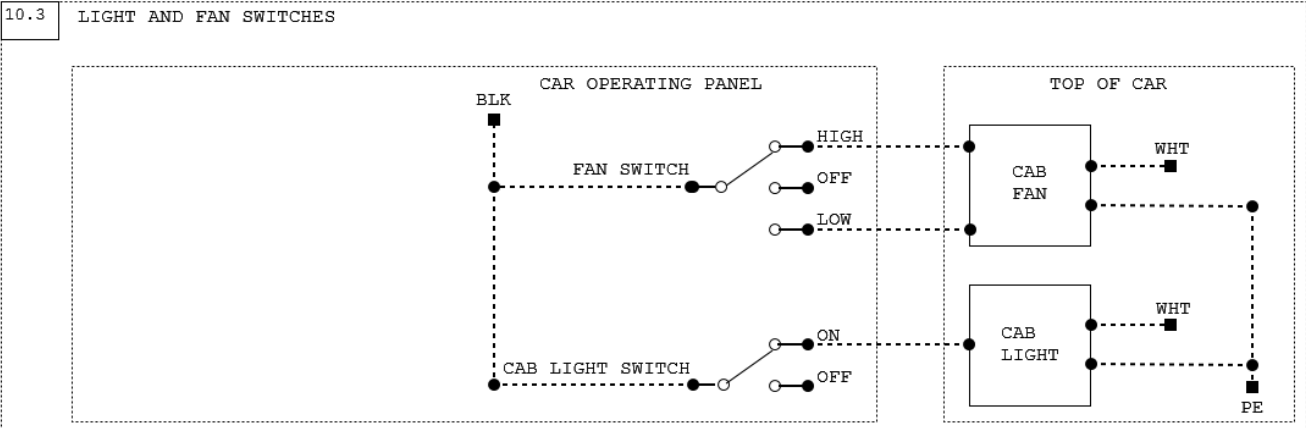
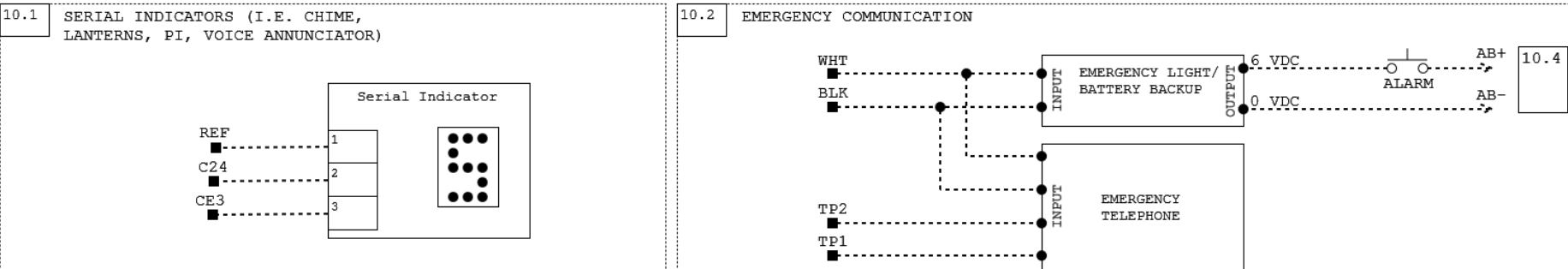
24

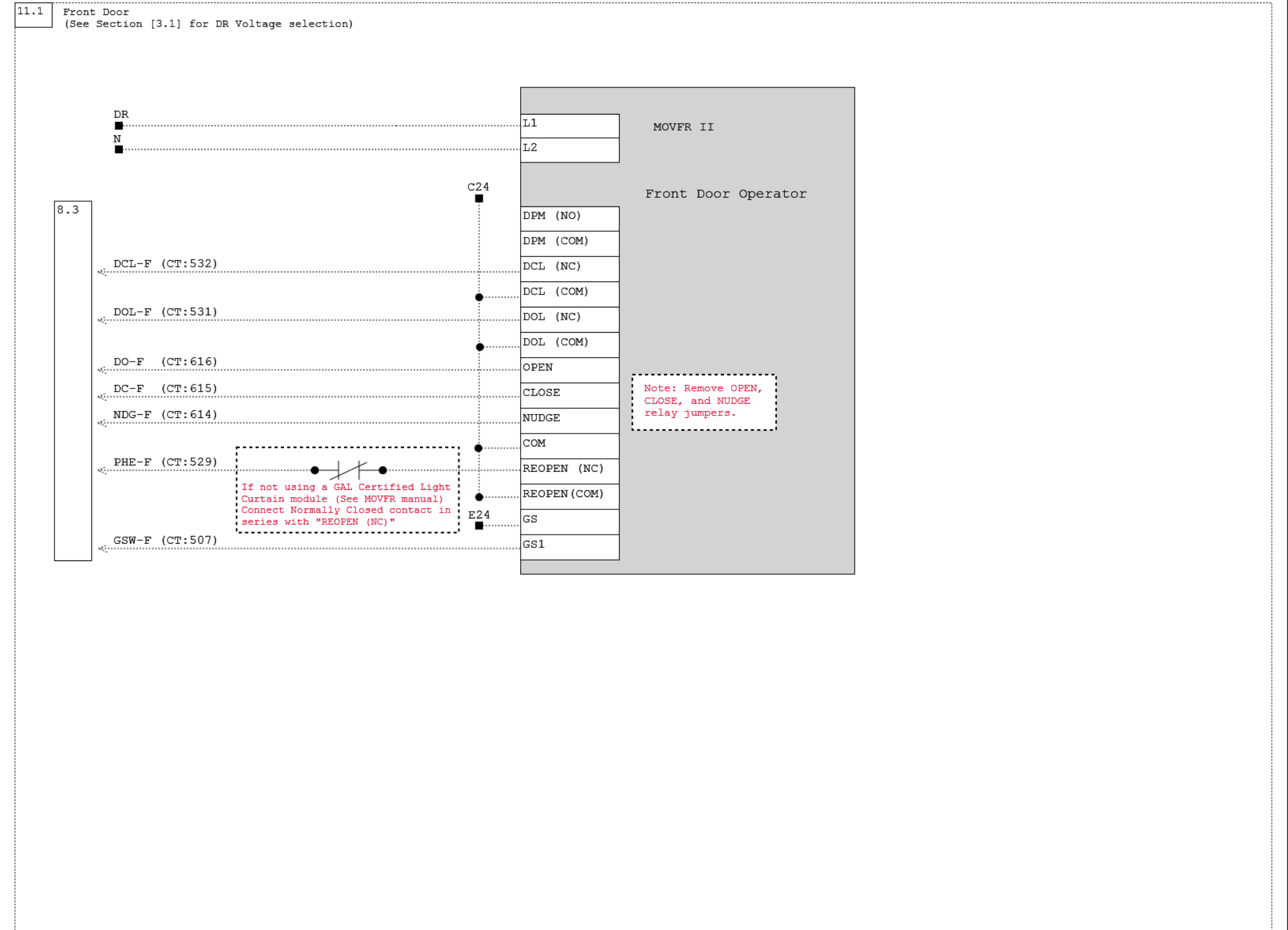
47

48

2

3

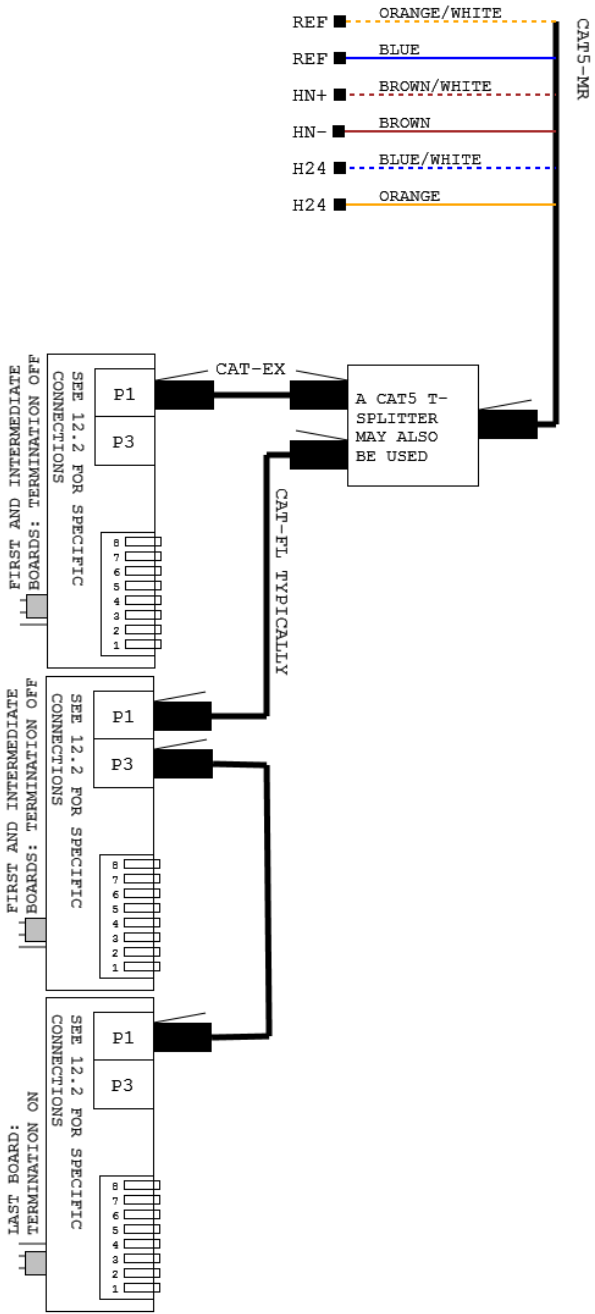




12.1

HN Hall Network

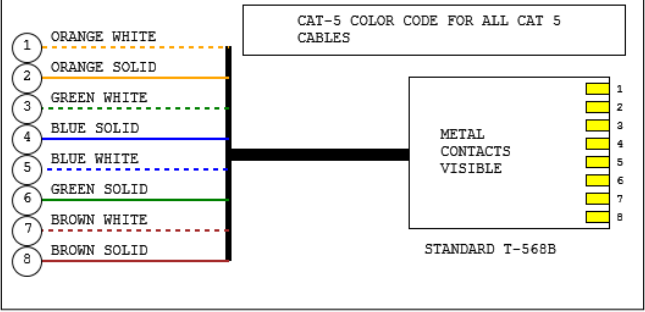
Connections located inside each machine room enclosure.



NOTES

THE ORDER THAT THE BOARDS ARE CONNECTED IS NOT IMPORTANT. P1 AND P3 ALLOW DAISY-CHAINING. SEE 12.2 FOR HALL BOARD CONFIGURATIONS

SMARTRISE-SUPPLIED CAT5 CABLES		
PART	LENGTH (FT)	TYPICAL USE
CAT-MR	25	MACHINE ROOM TO HOISTWAY, FRONT TO REAR RISER
CAT-FL	15	FLOOR TO FLOOR, HALL CALL TO HALL LANTERN
CAT-EX	5	SPLITTER TO HALL CALL
CAT-BX	1	HALL CALL TO FIRE RECALL BOARD OR ACCESS BOARD



HN Hall Network DIP Switch Settings												
Landing	Front	Rear	PI	Type	Hall Board DIP Switch (X denotes switch is on)							
					1	2	3	4	5	6	7	8
1	x		B	Hall Calls								
2	x		1	Hall Calls	x							
3	x		2	Hall Calls		x						
4	x		3	Hall Calls	x	x						
1	x		B	Hall Lantern							x	
2	x		1	Hall Lantern	x						x	
3	x		2	Hall Lantern		x					x	
4	x		3	Hall Lantern	x	x					x	
				Fire Recall								x

13.91

HALL BOARD CONFIGURATIONS

